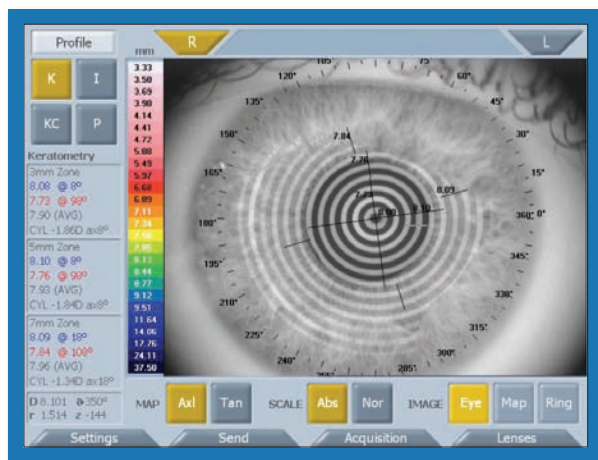


CA-200 Corneal Analyzer



Complete Corneal Surface Analysis



CA-200

- On board state of the art PC allows for complete stand alone operation
- WiFi communication with PC based software
- Automatic “best image capture”
- Automatic pupil recognition
- Kerataconus index

Specifications

Topographic cone	24 rings on a 43D cone
Measured points	More than 10.000
Analyzed points	More than 100.000
Corneal coverage	From 0.3 to 10.5 mm
Dioptre range	From 1 to 120 D
Working distance	80 mm
Resolution	+/- 0.01;1 micron
Accuracy	Axial 0.03 mm
Focusing system	Auto focus and auto alignment

