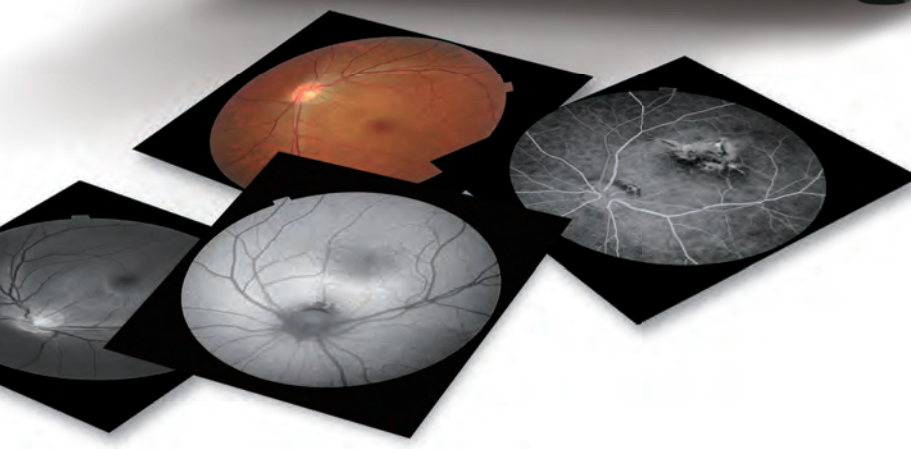
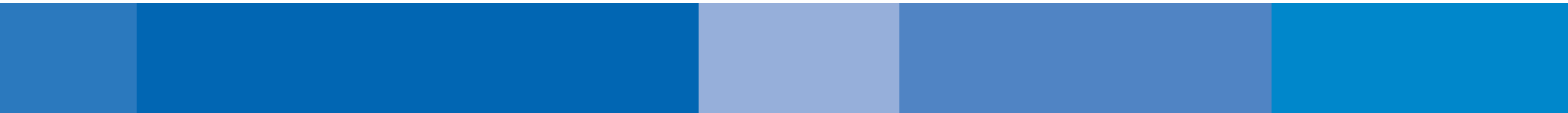


# TRC-NW8F plus

Non-Mydriatic Retinal Camera

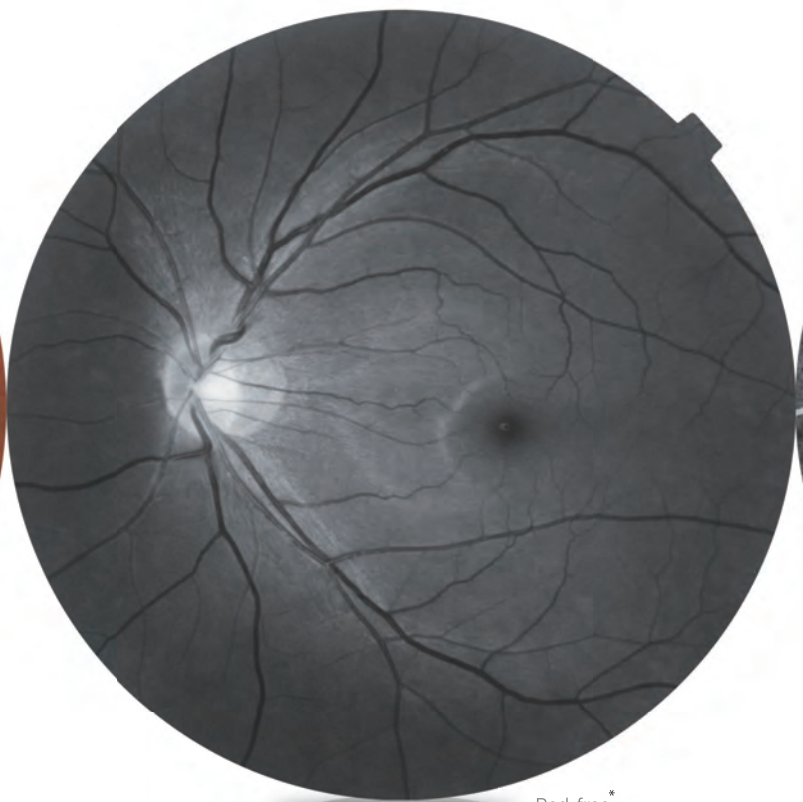


PERFORMANCE  
YOU CAN COUNT ON





Color



Red-free\*

## Multi Function Retinal







Fluorescence Angiography



Fundus AutoFluorescence\*\*

## Camera TRC-NW8F *plus*

Color, Red-free\*, Fluorescein Angiography and Spaide Fundus AutoFluorescence (FAF) imaging provides a wide range of imaging modalities to meet the needs of most of eye care facilities! The TRC-NW8F plus features many automatic features to make it easy to operate. A new low intensity flash increases patient comfort.

### Features

- » Multi Function Retinal Camera
- » Auto Focus and Auto Capture
- » Automatic Small Pupil Detection
- » Easy to Use
- » Exclusive Spaide FAF Filters
- » Continuous Capturing Function
- » Low Flash Intensity
- » Space-saving Compact Design

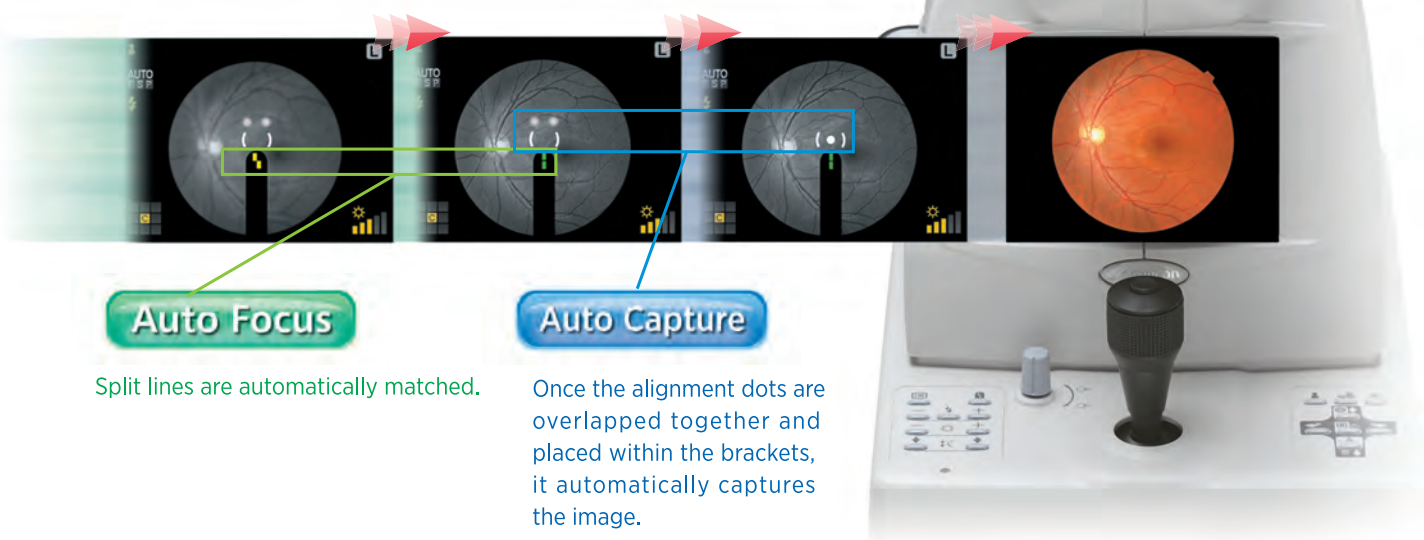
# Easy to Use



**TRC-NW8F plus**  
Non-Mydriatic Retinal Camera

## Auto Focus and Auto Capture

The TRC-NW8F plus is built for ease of operation and durability. Topcon's ample experience in the manufacturing of retinal cameras make it possible to bring all the benefits of non-mydriatic and mydriatic imaging into a single compact instrument. The Auto Focus and Auto Capture functions can be switched to manual operation if necessary.



**Auto Focus**

Split lines are automatically matched.

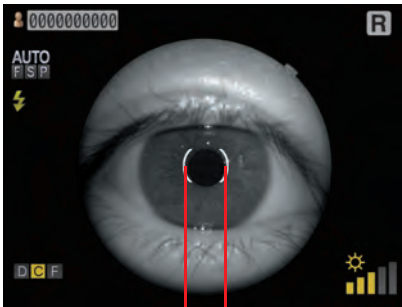
**Auto Capture**

Once the alignment dots are overlapped together and placed within the brackets, it automatically captures the image.

※ Exclusively for color and FAF photography.

## Auto Small Pupil Detection

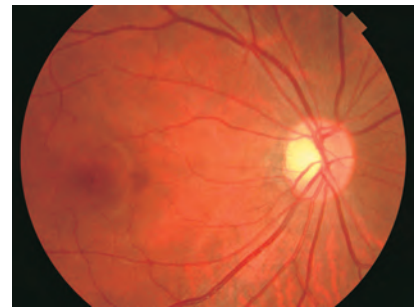
In patients with small pupils the automatic small pupil detection feature permits capturing images through pupils as small as 3.3mm in diameter.



φ 3.3mm



Auto Small Pupil Detection Mode:  
Angle of coverage 45°



Auto Small Pupil Detection Mode:  
Angle of coverage 30°(Digital Zoom)

## Low Flash Intensity

Patient comfort and minimizing the side effects of flash illumination have always been Topcon's concerns. The TRC-NW8F plus can capture images using 50% of the flash intensity used in conventional models.

## One Touch Operation

Different modes of capture (color, Red-free, FA, FAF) can be easily activated either by pressing a switch or sliding a filter lever.

## Stereo Photography

With just one touch of the stereo switch, stereo capture is activated. The instrument automatically sets for two consecutive images to be obtained with just the right amount of shift for consistent and reproducible stereo viewing. The stereo pair can be viewed with IMAGenet R4.

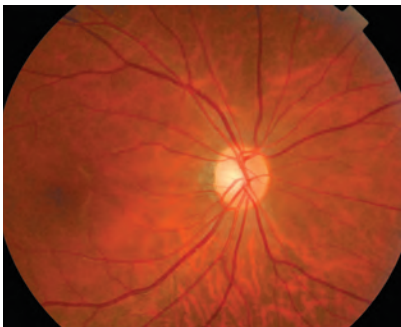




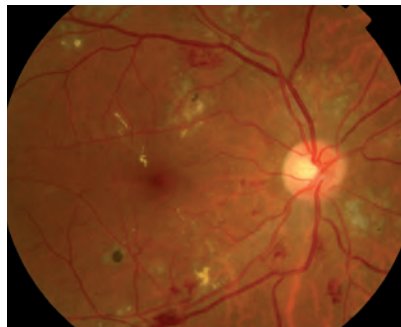
# High Quality Image

## Image Quality and Durability: Two Very Important Features

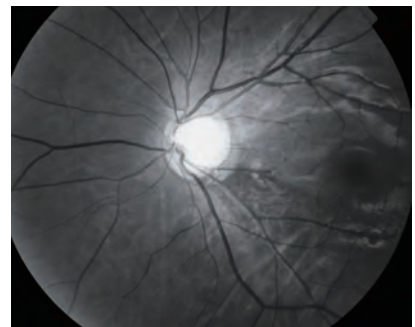
With these requirements in mind Topcon selected one of the most reputable brands of digital SRL cameras to be used as the capturing sensor of the TRC-NW8F plus. This choice ensures continuity and consistency in the quality of images regardless of the changes in technology.



Normal Eye



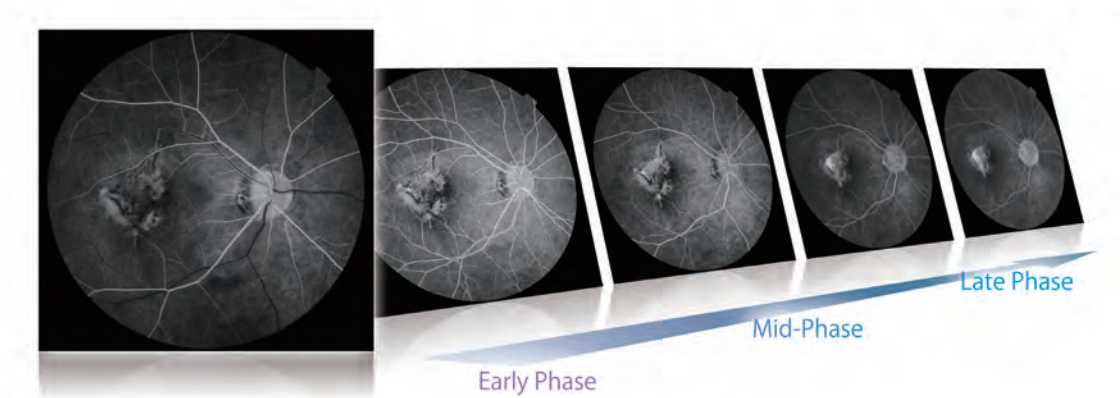
Diabetic Retinopathy



Glaucoma

## Fluorescein Angiography

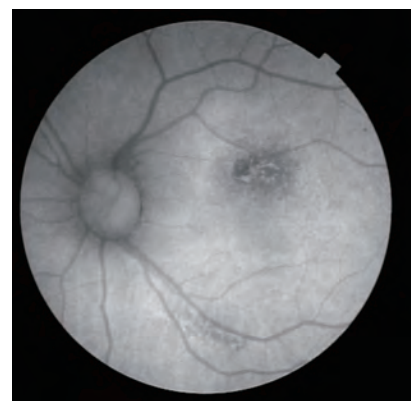
The TRC-NW8F plus makes fluorescein angiography simple for the operator and comfortable for the patient. The low intensity flash enhances patient cooperation and the ergonomically located controls simplify the photographer's task.



## Exclusive Spaide Fundus AutoFluorescence

Built in AutoFluorescence filters allow for easy capture of FAF images for observation of Lipofucin deposits in the retinal pigment epithelium. The exclusive Spaide FAF filters are the result of several years of research and are more efficient than previous filters, requiring less illumination and yielding better contrast.

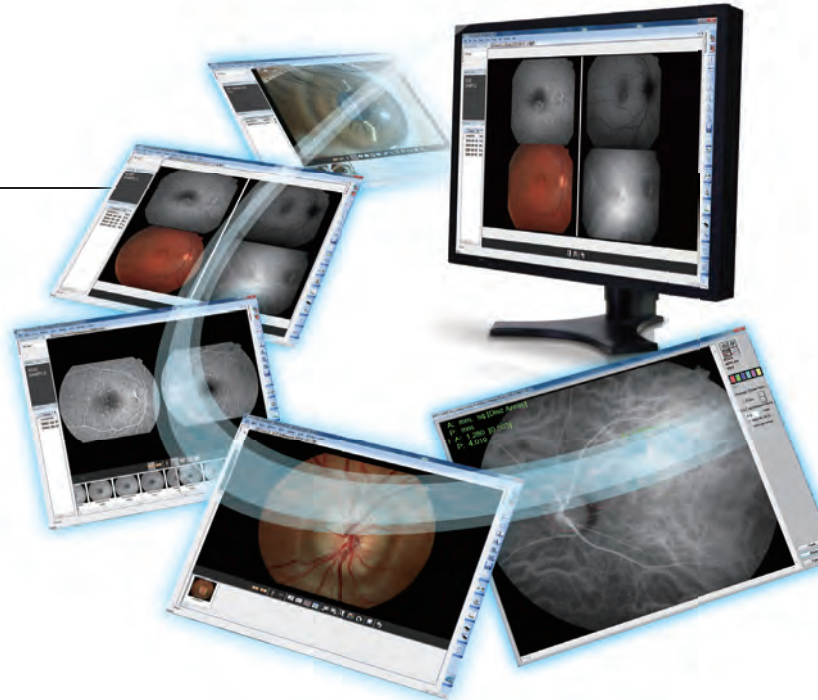
\* Spaide FAF filter is produced under the supervision and authorization of Dr. Richard F. Spaide, Vitreous, Retina, Macula Consultants of New York, NY, USA.



# Imaging System

## IMAGEnet™ R4

IMAGEnet™ R4's cutting edge and comprehensive patient database management system features efficient data viewing, storage, analysis and flexible networking solutions. With its unique utilities, such as Auto Mosaic, stereo functionality, patient consultation, IMAGEnet™ R4 software streamlines exam analysis and enhances communication with patient.



## EZ Capture™

Simple & easy software EZ Capture allows you to transfer and save retinal images with intuitive handling. Timer, R/L eye detection, angle and patient data will also be transferred with images.

Pre-View Window

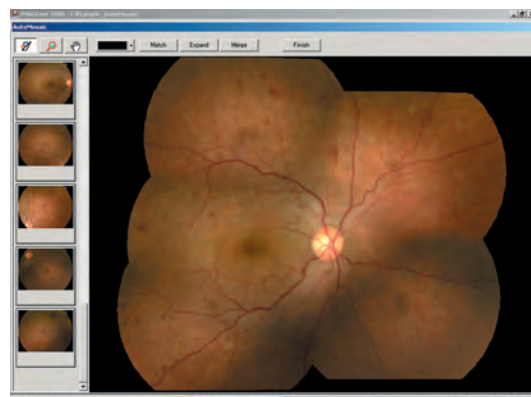
Thumbnail Index

Picture Information

ID	999-99-9999	TOPCON	FA	00:00:31	R	63Ws	ISO	Fixation	Center
Color									
FA				00:00:31					
Auto Fluor									

## Auto Mosaic Software (Optional)

A panoramic view of the retina is seamlessly stitched together using the Auto Mosaic software. The Auto Mosaic automatically aligns and arranges image to provide a wide field seamless image of the retina.



## Specifications

Picture Angle	45° 30° *
Working Distance	40.7mm
Photographable Area of Pupil	φ 4.0mm or more φ 3.3mm or more when the small pupil diaphragm is used
Type of Photography	Color photography, Red-free photography **, FA photography and FAF photography
Focus Range to Correct the Refractive Errors of the Patient's Eye	Without correction lens: -13D to +12D *** With minus correction lens: -33D to -12D With plus correction lens: +9D to +40D
Auxiliary function for photography	Auto focus function (Used only within the split line working range. This function can be turned ON / OFF.)
Fixation Target	Internal / External fixation target can be selected Internal fixation target: <ul style="list-style-type: none"> <li>» Center / Periphery</li> <li>» Right / Left eye automatic detection</li> <li>» Optional position presetting function</li> </ul>
Base Movement	Back-forth : 46mm, Right-left : 100mm, Up-down : 30mm
Chinrest Movement	67mm
Power source	Frequency : 50 / 60Hz Voltage : AC100-240V
Weight	23.8kg (Without external fixation target)
Dimensions	274(W) X 508(D) X 536-566(H)mm
Power consumptions	400VA (Maximum), 100VA (Normal)

- \* Digital Zoom  
\*\* Digital Red-free  
\*\*\* Split line working range

## Optional Accessory



External Fixation Target



- \* PC and Camera sold separately.  
\* Subject to change in design and/or specifications without advanced notice.  
\* In compliance with the terms of the Export Administration Regulation of the United States of America, this product may not be available in some regions or countries.

**IMPORTANT** In order to obtain the best results with this instrument, please be sure to review all user instructions prior to operation.



TOPCON CORPORATION



TOPCON CORPORATION



EC9711081

TOPCON CORPORATION

## TOPCON CORPORATION

75-1 Hasunuma-cho, Itabashi-ku, Tokyo 174-8580, Japan. Phone:3-3558-2523/2522 Fax:3-3965-6898 www.topcon.co.jp

### TOPCON MEDICAL SYSTEMS, INC.

111 Bauer Drive, Oakland, NJ 07436, U.S.A.  
Phone:+1-201-599-5100 Fax:+1-201-599-5250 www.topconmedical.com

### TOPCON CANADA INC.

110 Provencher Avenue, Boisbriand, QC J7G 1N1 CANADA  
Phone:+1-450-430-7771 Fax:+1-450-430-6457 www.topcon.ca

### TOPCON EUROPE MEDICAL B.V.

Essebaan 11; 2908 LJ Capelle a/d IJssel; P.O.Box145;  
2900 AC Capelle a/d IJssel; THE NETHERLANDS  
Phone:+31-(0)10-4585077 Fax:+31-(0)10-4585045  
E-mail: medical@topcon.nl; www.topcon.eu

### ITALY OFFICE

Viale dell'Industria 60; 20037 Paderno Dugnano; (Milano), ITALY  
Phone:+39-02-9186671 Fax:+39-02-91081091 E-mail: topconitaly@tiscali.it; www.topcon.it

### DANMARK OFFICE

Praestemarksvej 25; 4000 Roskilde, DANMARK  
Phone:+45-46-327500 Fax:+45-46-327555  
E-mail: topcon@topcondanmark.dk www.topcondanmark.dk

### IRELAND OFFICE

Unit 276, Blanchardstown; Corporate Park 2 Ballycoolin Dublin 15, IRELAND  
Phone:+353-18975900 Fax:+353-18293915 E-mail: medical@topcon.ie; www.topcon.ie

### TOPCON S.A.R.L.

89, rue de Paris 92585 Clichy, FRANCE  
Phone:+33(0)1-41069494 Fax:+33(0)1-47390251 E-mail:topcon@topcon.fr; www.topcon.fr

### TOPCON DEUTSCHLAND G.m.b.H.

Hanns-Martin-Schleyer Strasse 41; D-47877 Willich, GERMANY  
Phone:+49-(0)2154-8890 Fax:+49-(0)2154-885177 E-mail:med@topcon.de; www.topcon.de

### TOPCON SCANDINAVIA A.B.

Neogatan 2; P.O.Box 25; 43151 Mölndal, SWEDEN  
Phone:+46-(0)31-7109200 Fax:+46-(0)31-7109249 E-mail:medical@topcon.se; www.topcon.se

### TOPCON ESPAÑA S.A.

HEAD OFFICE  
Frederic Mompou 4 Esc. A Bajos 3, 08960 Sant Just Desvern Barcelona, SPAIN  
Phone:+34-93-4734057 Fax:+34-93-4733932 E-mail: medica@topcon.es; www.topcon.es

### PORTUGAL OFFICE

Rua da Fonte, 6-A, L.O.22, 2790-072 Carnaxide, PORTUGAL  
Phone:+351-210-994626 Fax:+351-210-938786 www.topcon.pt

### TOPCON ( GREAT BRITAIN ) LTD.

Topcon House, Kennet Side, Bone Lane, Newbury Berkshire RG14 5PX United Kingdom  
Phone:+44-(0)1635-551120 Fax:+44-(0)1635-551170 E-mail:medical@topcon.co.uk; www.topcon.co.uk

### TOPCON POLSKA Sp. z o. o.

ul. Warszawska 23; 42-470 Sievierz, POLAND  
Phone:+48-(0)32-6705045 Fax:+48-(0)32-6713405 www.topcon-polska.pl

### TOPCON SINGAPORE MEDICAL PTE. LTD.

60 Alexandra Terrace, #08-27 The Comtech, Singapore 118502  
Phone:+65-68720606 Fax:+65-67736150 E-mail:medical\_sales@topcon.com.sg www.topcon.com.sg

### TOPCON INSTRUMENTS ( MALAYSIA ) SDN.BHD.

No. D1, (Ground Floor), Jalan Excella 2, Off Jalan Ampang Putra,  
Taman Ampang Hilir, 55100 Kuala Lumpur, MALAYSIA  
Phone:+60-(0)3-42709866 Fax:+60-(0)3-42709766

### TOPCON INSTRUMENTS ( THAILAND ) CO.,LTD.

77/162 Sinnsathorn Tower, 37th Floor, Krungthoburi Rd., Klongtongsoi,  
Klongsam, Bangkok 10600, THAILAND  
Phone:+66(0)2-440-1152-7 Fax:+66(0)2-440-1158

### TOPCON CORPORATION BEIJING OFFICE

Block No.3, Kangding Street Beijing Economic-Technological Development Area,  
Beijing, 100176, CHINA  
Phone:+86(0)10-6780-2799 Fax:+86(0)10-6780-2790

### TOPCON CORPORATION SHANGHAI OFFICE

14L Huamin Empire Plaza, No.726, Yan-an Xi Road,  
Shanghai, 200050, CHINA  
Phone:+86(0)21-5238-7722 Fax:+86(0)21-5237-0761

### TOPCON CORPORATION BEIRUT OFFICE

P.O.Box 70-1002 Antelias Beirut, LEBANON  
Phone:+961-4-523525/523526 Fax:+961-4-521119

### TOPCON CORPORATION DUBAI OFFICE

P.O.Box 293705, Dubai Airport Free Zone L.L.U, J-12, Dubai, U.A.E  
Phone:+971-4-299-5900 Fax:+971-4-299-5901