

# VuMAX™ HD

Simply the Best





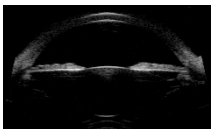
Hands down the gold standard in ophthalmic ultrasound. Configurable as a B-scan, UBM, or combination system with optional A-scan, the VuMAX HD is cutting edge technology providing unparalleled image quality with elegant and powerful usability. Yes, simply the best.

## UNPARALLELED UBM Image Quality.

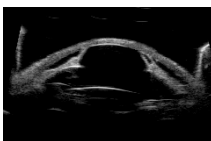
The VuMAX series from Sonomed Escalon has long been the gold standard in UBM imaging. Now with Enhanced Focus Rendering™ and other enhancements, the VuMAX™ HD delivers the most outstanding UBM images and video clips of the entire anterior chamber.



The specialized angle detail scan setting optimizes resolution of different structures at the angle and behind the iris, providing the premier diagnostic tool for identifying *causes* of glaucoma-related concerns, including angle detail and permeability of the trabecular meshwork, plateau iris syndrome, effects of pupil movement on the angle, and other aspects of glaucoma.



Accurately measure sulcus-to-sulcus to properly and confidently size ICLs to prevent post-operative surprises. The specialized sulcus-to-sulcus scan setting is optimally engineered to enable consistent viewing of key anatomical landmarks required to ensure accurate sulcus-to-sulcus measurements.



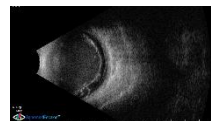
View the entire anterior segment in great detail, with optimized scan settings of the VuMAX™ HD. Clearly visualize the ciliary body, pars plana, and other structures and identify tumors, cysts, trauma, uveitis, and other pathologies. The VuMAX™ HD even allows for visualization and video capture of dynamic accommodation.



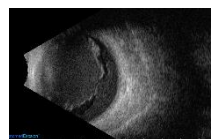
## UNPARALLELED B-Scan Image Quality.

The all-new B-scan mode of the VuMAX™ HD produces truly outstanding imaging of the posterior segment that has become the new gold standard in ophthalmic ultrasound.

Easily visualize extraordinary fine details within video clips and still images generated using proprietary Enhanced Focus Rendering™, providing image quality unmatched by other imaging systems.



Select from 4 preset scan modes to optimize image quality in area of interest, including orbit, vitreous body, retina surface, and deep retina / choroid.



## UNPARALLELED. Period.

Elegant user interface provides useful tools that are intuitive, simple, and efficient to use. Time-saving features such as selectable patient database display to easily search and access archived exam records. Document scan orientation with a single click. Replay videos in real-time, slow motion, or frame-by-frame. Super-impose A-scan trace, perform linear and angle measurements, and annotate onto B-scan and UBM images.

Biometric A-scan with auto calculation of axial length average and standard deviation, nine customizable IOL formulas, lens database and more. Diagnostic A-scan option also available.

Integrated enterprise-level computer hardware with two large RAID-configured SATA 1 TB enterprise class hard drives for data storage and separate SATA SSD solid-state drive for operating system. Large 21" ultra HD monitor (1920 x 1080 pixel). Wireless keyboard and mouse interface. Easy interface with image management and EMR systems.

Simply the best.



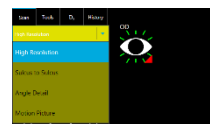
Contact Sonomed Escalon  
at 800-227-1285  
For More Information

## B-Scan and UBM

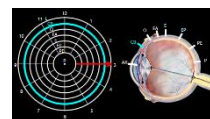
- Ultrasound Probes**
  - Sealed 12 MHz or 20 MHz B-probes with focused transducers
  - Water path probe with 35 MHz or 50 MHz transducers
- Scan Settings**
  - Selectable scan setting profiles to optimize image quality
  - UBM: sulcus-to-sulcus, angle detail, high resolution, and motion picture
  - B-Scan: orbit, vitreous body, retina surface, and deep retina / choroid
- Scan Sampling**
  - 256-ray scan with 2048 sample points for each ray (over a half-million sample points per transducer sweep)
- Scan Controls**
  - Fully adjustable time-varied gain (TVG), baseline, log gain, and exponential gain (e-gain)
- Scan Position Indicator**
  - One-click selection of axial or longitudinal scan clock position with eye model confirmation
  - Free-form text for scan position details that automatically annotate onto images and video clips
- Video Clips**
  - Capture and store 50-frame video clips at up to 20 fps
  - Replay in real-time, scalable slow motion, or one frame at a time
  - Store up to 12 video clips per exam, easily add or remove video clips from exam record
- Images**
  - Separately save any number of individual frames from video clips as images, complete with annotation(s)
- A-Scan Trace**
  - Superimpose arbitrary A-scan trace onto images with a single button click
- Measurement**
  - Unlimited measurements using linear calipers and angle measurement tool

## A-Scan

- Ultrasound Probes**
  - 10 MHz A-probe
- Scan Modes**
  - Selectable immersion or direct contact A-scan with manual or automatic capture (cataract, dense cataract, aphakic, and pseudophakic modes)
- Measurements**
  - Auto calculation of axial length, anterior chamber depth, lens thickness, and vitreous length
  - Individual zone velocity selection
  - Axial length average and standard deviation provided for up to 10 scans per exam
  - On-board calibration
- IOL Formulas and Selection**
  - Refractive IOL Formulas: Binkhorst, Regression-II, Theoretic/T, Holladay, Hoffer-Q, Haigis
  - Post-Refractive IOL Formulas: Laskany Myopic, Laskany Hyperopic, Aramberri Double-K
  - Integrated full lens database with selectable user profiles
- Diagnostic A-Scan**
  - Optional diagnostic A-scan module
  - 12 MHz diagnostic A-scan



8 UBM and B-Scan preset scan modes with settings optimized for areas of interest



Easy graphical selection of scan orientation for all modes



Frame-by-frame, full speed, and slow motion review of video clips

## General

- Wireless Controls**
  - Foot pedal, keyboard, and mouse
- Hard Drives**
  - Two RAID-configured 1 TB enterprise class drives for data storage
  - Separate SATA SSD solid-state drive for operating system
- Reports**
  - Detailed exam reports for printing or exporting
- Connections**
  - Five (5) USB ports
  - GigE Ethernet LAN port
  - HDMI, serial, VGA, and RJ-45 ports
- Printers**
  - Any Windows-compatible printer
- Operating System**
  - Windows 10 Pro
- Console Dimensions**
  - 13.5" w x 13.5" d x 3.0" k (34.3 cm x 34.3 cm x 7.6 cm)
- Power**
  - 100-240 VAC, 50/60 Hz auto-switching medical-grade power supply

